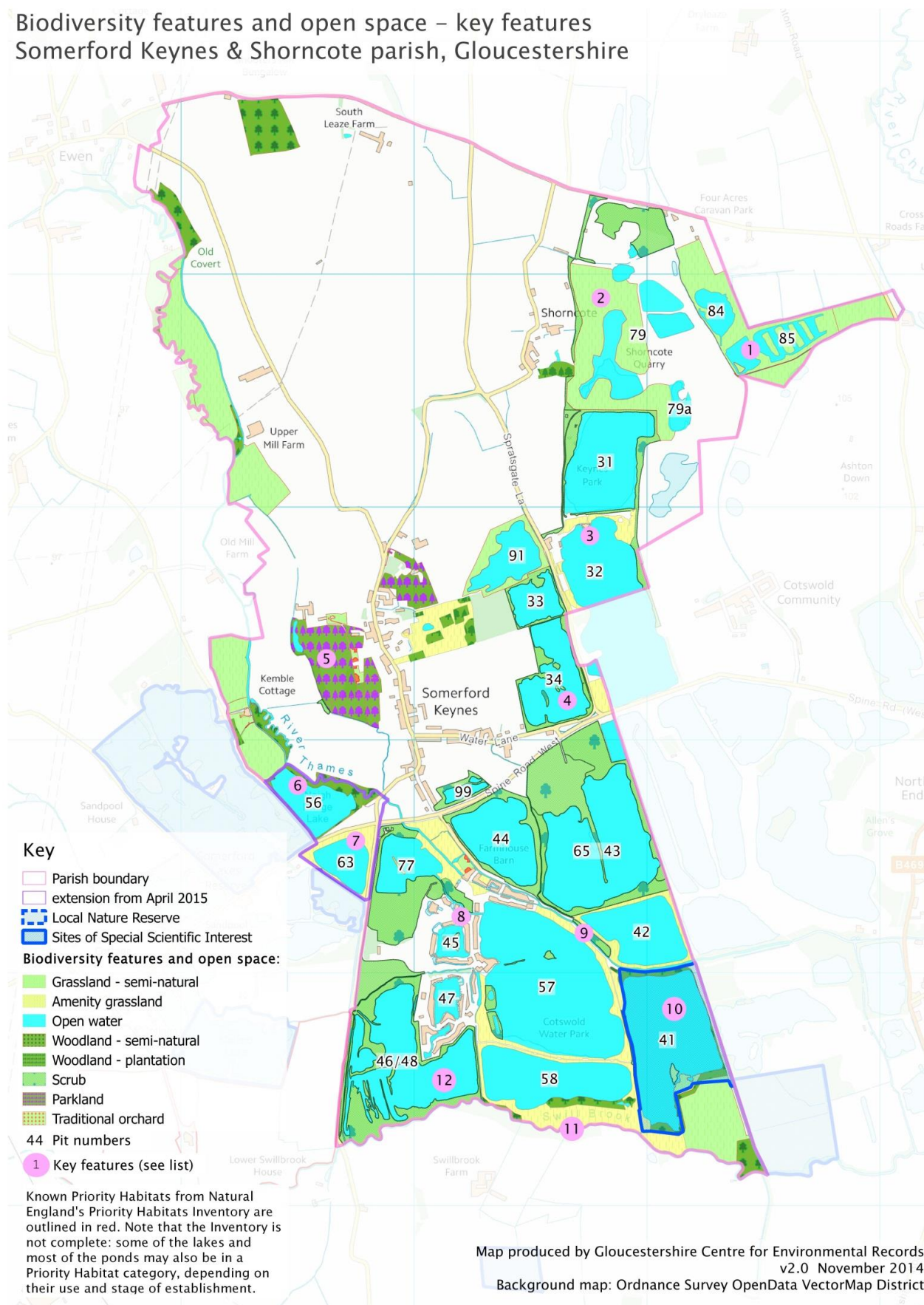


Appendix 8 – Important Biodiversity Sites

Biodiversity features and open space – key features Somersford Keynes & Shorncote parish, Gloucestershire



Key biodiversity and open space features in Somerford Keynes and Shorncote parish				
No. on map	Name	Type	Status	Comments
1	Shorncote reedbed	Gravel pit lake	Priority Habitat	Not included on Natural England's latest Priority Habitat Inventory, which is out of date for this area.
2	Shorncote Quarry	Mixed grassland		Several grassland, scrub and lake habitats
3	Keynes Country Park	Gravel pit lake	Priority Habitat	Lakes and an artificial paddling beach
4	Cokes Pit	Gravel pit lake	Local Nature Reserve	Popular nature reserve
5	Manor House, Somerford Keynes	Parkland	Priority Habitat	Included on Natural England's "wood pasture and parkland" inventory as well as their Priority Habitat Inventory.
6	Neigh Bridge Lake and Country Park	Gravel pit lake		Will be in the parish from April 2015.
7	Netherwood Lake	Gravel pit lake		Will be in the parish from April 2015. A coarse fishing lake.
8	Lower Mill Estate	Gravel pit lake		House & leisure development and series of lakes, some managed for wildlife.
9	River Isis (Upper Thames)	River		Lots of protected species records are along the river.
10	Cotswold Water Park SSSI	Gravel pit lake	SSSI	Large, established lake with tree & scrub surround.
11	Swill Brook	River		Important for species such as otter.
12	Swillbrook Lakes	Gravel pit lake		Popular nature reserve esp. for birdwatching

Notes:

The above features were mapped by GCER from a variety of sources including:

- Natural England's Priority Habitat Inventory and designation maps;
- Ordnance Survey Open Data Vector mapping;
- Infoterra aerial photography, used under licence from Natural England;
- GCER Phase 1 Habitat Survey;
- Cotswold Water Park leisure map.

Features marked as "Priority Habitat" are listed on Natural England's Priority Habitats Inventory. Note however that the Inventory is rather out-of-date and many of the lakes and ponds are likely to fall within a Priority Habitat Category as well.

Other features of interest too numerous to number individually include:

- Fragments of traditional orchard, now a Priority Habitat in its own right;
- Small areas of grassland in churchyards and amenity areas;
- Semi-natural floodplain meadows alongside the River Thames (Isis) – also a Priority Habitat;
- Small farm ponds, most of which fall into the Priority Habitat ponds category;
- Extensive developing scrub, some of which, whilst not listed as a Priority Habitat, is highly significant for birds such as warblers and nightingales.

GCER cannot guarantee that the lake boundaries are all precisely up-to-date as many are in a constant state of change.

The full reports from the Gloucestershire Wildlife Trust survey can be found in the ‘Evidence Base’ volume of the Plan.

